



# Liverpool & Morecambe College PROJECT INFORMATION PACK



## KwaZulu-Natal Community Volunteering Project

**AFRICA**

**GLOBAL** reach. **ADVENTURE** for all. **PROJECTS** to inspire.

# TRIP OVERVIEW

AFRICA

## Liverpool & Morecambe College – Booking Reference 4591

### Trip Dates:

2<sup>nd</sup> February – 18<sup>th</sup> February 2025

### International Flights:

TBC 2<sup>nd</sup> February London Heathrow – Johannesburg arriving 3<sup>rd</sup> February\*

TBC 17<sup>th</sup> February Johannesburg – London Heathrow arriving 18<sup>th</sup> February\*

\*Always check the flight timings on your final documents

**Baggage Allowance** – 1 piece of checked baggage @20kgs, 1 piece of hand baggage @ 7kgs max dimensions 56x36x25 cms

### Project:

KwaZulu-Natal Community Volunteering Project – Bonamanzi & St. Lucia

**AFRICA**

# INDEX

<b>PROJECT LOCATION</b>	<b>4-7</b>
<b>ABOUT THE PROJECT</b>	<b>8-15</b>
<b>SAMPLE ITINERARY</b>	<b>16</b>
<b>ACCOMMODATION &amp; LIFESTYLE</b>	<b>17-21</b>
<b>USEFUL INFORMATION</b>	<b>22-25</b>







AFRICA

# ABOUT THE PROJECT

Overview and location  
of the project

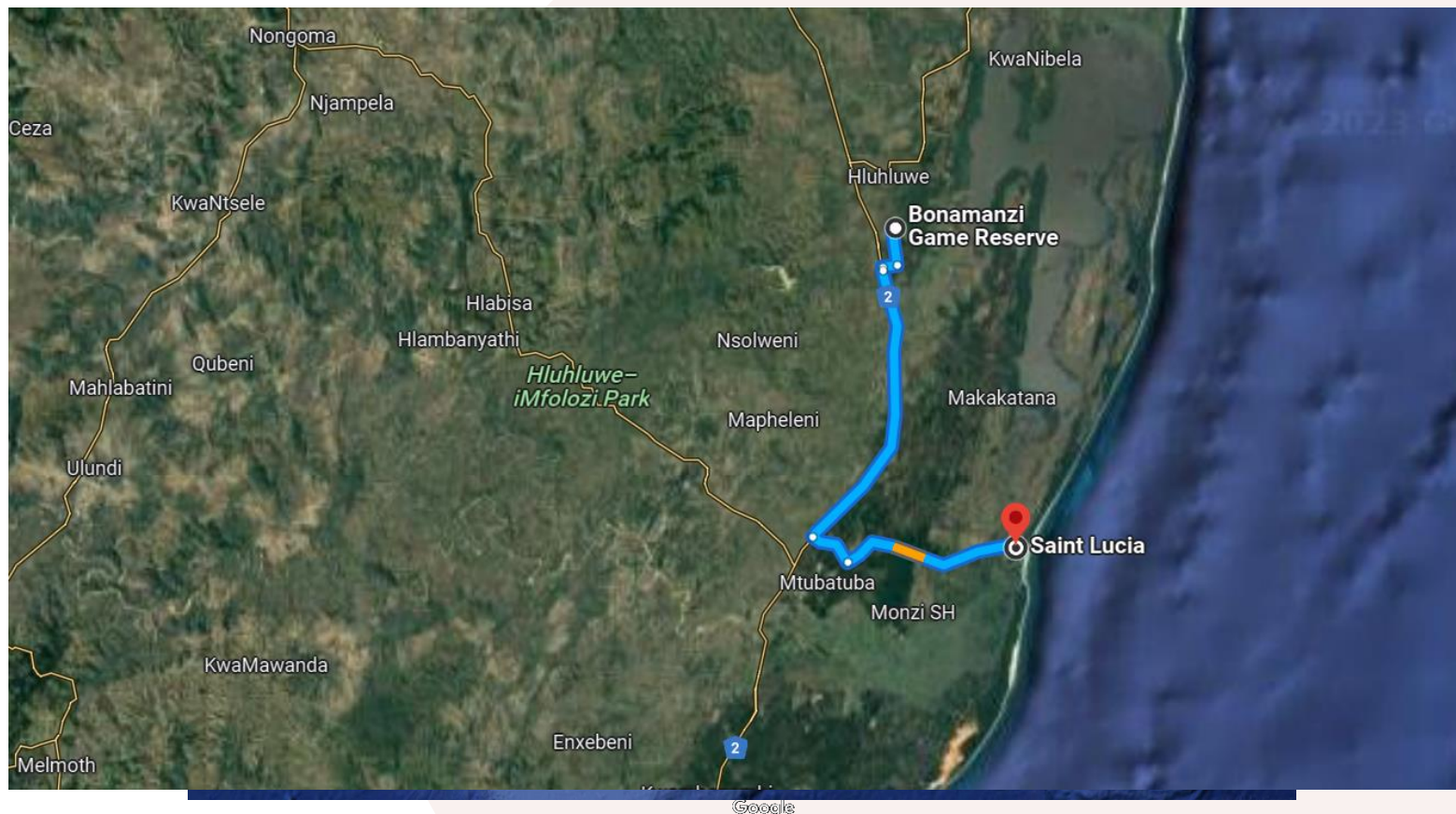


# ABOUT THE PROJECT

AFRICA

## Location

- Staying in two locations on the Northeastern Coast
- Bonamanzi Game Reserve and St Lucia



# ABOUT THE PROJECT

AFRICA

## KwaZulu-Natal Community and Volunteering Project

The KwaZulu-Natal Community Volunteering project is located conveniently close to Durban (3 hours) on the KwaZulu-Natal North Coast in South Africa it is close to the beautiful St Lucia Wetlands, a UNESCO World Heritage Site

The main project location is Bonamanzi and the surrounding community; Bonamanzi is a Zulu word for "look water!" The nearest town is Hluhluwe which has South Africa's oldest Game Reserve.

The second module of the project is located in St Lucia this is a small but quaint village that is becoming a top tourist destination, St Lucia is famous for its huge population of wild hippos.

KwaZulu-Natal including St Lucia is located in a low to no risk malaria area – Antimalarials are not usually advised.



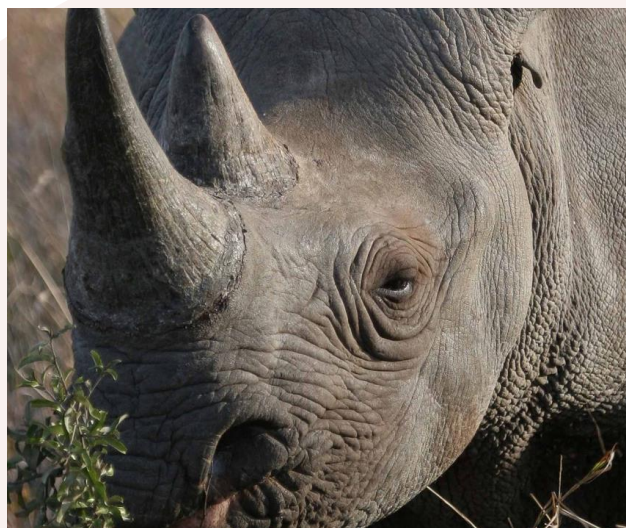


# ABOUT THE PROJECT

AFRICA

## Bonamanzi

Bonamanzi is a privately owned Game Reserve, 4000 hectares in size with the Hluhluwe River on its Eastern border. Proclaimed a Natural Heritage Site in 1995 in recognition of the biodiversity of the Reserve it offers Sand Forests, Savanna and wetland Areas. This diversity is why Bonamanzi is recognized as one of the best birding destinations in Southern Africa.





# ABOUT THE PROJECT

AFRICA

## St Lucia Wetlands

**St. Lucia** is situated on the northern side of the estuary, the largest in Southern Africa, and is totally surrounded by the Greater St. Lucia Wetlands Park and World Heritage Site. The area is famous for its wetlands and is a fantastic opportunity to witness Crocodiles and Hippos in their natural environment.





# YOUR PROJECT

AFRICA

## KwaZulu-Natal Community Volunteering Project

Students will be taught and have the opportunity to work alongside several inspiring professionals -

**Project Rhino.** - Project Rhino aims to educate school children on the conservation of Rhinos and the Rhino poaching crisis. It aims to increase relationships with game reserves and the neighboring communities. Project Rhino has reached over 700,000 school children in South Africa, educating these children about the importance of the natural world and the wildlife around them. Children attend presentations and are encouraged to produce artwork in support of the local wildlife. The education links directly to the Zulu culture

**Move Africa** - Champion and encourage girls on how to use menstrual cups as a sustainable solution to period poverty. In Africa 3 out of 10 girls miss out on a week of school every month, due to not being able to afford menstrual products. This has a huge impact on the girl's outlook. Move Africa's aim is to equip young women with sustainable sanitary ware and relevant education about menstrual cycles





# YOUR PROJECT

AFRICA

## KwaZulu-Natal Community Volunteering Project

**Ndumu Charitable Foundation** – Focuses primarily on improving early childhood development and education within communities, particularly in the refurbishment of creches and nurseries. Projects include building and improving play equipment, painting the classrooms, digging vegetable gardens and talking to staff about the importance of correct nutrition. Ndumu are also passionate about installing libraries in primary schools.





# YOUR PROJECT

AFRICA

## KwaZulu-Natal Community Volunteering Project

**Kingsley Holgate Foundation** - has supported conservation efforts and communities bordering wildlife parks throughout Africa for over a decade. Their Early Childhood Development programme works to improve the nutrition and education of over 3000 local children who live in rural communities on the boundaries of wildlife reserves.

**Woza Moya** - This charity aims to reduce poverty through arts and crafts. Woza Moya assists those in need to develop skills and learn how to turn their skills into an income by using local products. Woza Moya provides ongoing business mentorship to ensure the crafting can become a self-sustaining business. Since 2002 over 350 crafters have been supported



# YOUR PROJECT

AFRICA

## KwaZulu-Natal Community Volunteering Project

**Khula Natural Health Clinic** – A busy community health facility in St Lucia, founded in 2017 focusing on Children's and women's health, through safe and affordable treatments using homeopathic remedies to complement Western medicine.

**Bonamanzi Conservation Foundation** – manages the day-to-day conservation management and research of the Big 4 Game Reserve. The foundation began in 2012 to re-establish land as a game reserve for wildlife. Wildlife conservation and community development are the foundation's main objectives. Bonamanzi has an ongoing relationship with Cumbria's Safari Zoo who are active in helping the reserve with their K9 unit.





# YOUR PROJECT

AFRICA

## KwaZulu-Natal Community Volunteering Project

St Lucia Estuary is the largest estuarine system in southern Africa it is home to one of the largest free-roaming Hippo populations in South Africa, there are also around 1200 Nile Crocodiles in the area.

### Estuary Hippo and Crocodile Tour

A boat tour of the estuary includes the opportunity to witness hippos, Nile crocodiles and many birds of prey. On the banks of the estuary, you can often see buffalo, zebra and antelope.





# YOUR PROJECT

AFRICA

## Community Development Activities



ANY QUESTIONS?

INFO@GAPAFRICAPROJECTS.COM | +44 (0)207 1937819

PROEJCT INFORMATION PACK 14



# YOUR PROJECT

AFRICA

## Community Development Activities



ANY QUESTIONS?

[INFO@GAPAFRICAPROJECTS.COM](mailto:INFO@GAPAFRICAPROJECTS.COM) | +44 (0)207 1937819

PROEJCT INFORMATION PACK 15



# YOUR PROJECT

AFRICA

## Community – GAP Donation Bags



ANY QUESTIONS?

[INFO@GAPAFRICAPROJECTS.COM](mailto:INFO@GAPAFRICAPROJECTS.COM) | +44 (0)207 1937819

PROJECT INFORMATION PACK 16



# YOUR PROJECT

AFRICA

## Example itinerary

Day 1: Travel overnight from the UK to Johannesburg

Day 2: Domestic onward flight to Durban, transfer to Bonamanzi, orientation and dinner

Day 3: Early morning game drive, after breakfast, depart for a creche refurbishment project for the day. After dinner a talk on Zulu Culture by Project Rhino

Day 4: Community outreach with Project Rhino, then return to the creche to continue with the project. After lunch reserve management work at Bonamanzi. After dinner night drive and leopard tracking.

Day 5: Early morning bush walk with track and signs, after breakfast head out to the creche refurbishment. After dinner a presentation by Move Africa

Day 6: Visit a school with Move Africa. After lunch, a Zulu arts and craft workshop with Woza Moya. Dinner and a talk by Woza Moya on empowering local craftsmen

Day 7: Anti-Poaching and K9 demonstration along with a snare sweep. Afternoon at leisure relaxing by the pool followed by an evening game drive and a braai by the lake

Day 8: Early morning bush walk and transfer to St Lucia (45min), with a tour of the craft markets and town in the afternoon, followed by a Hippo and Crocodile estuary sunset boat tour

Day 9: After breakfast spend the day at a local orphanage at Khula Village. Choice of restaurants for dinner (not included)

Day 10: Explore the local natural health clinic with a talk and tour of the facility, the afternoon is time to relax at the beach

Day 11: Today will be spent at a local Creche with some time to relax by the beach in the afternoon

Day 12: Your final day in St Lucia will be at the natural health clinic.

Day 13: Depart St Lucia to Durban for your flight to Johannesburg and your overnight flight back to London.

Day 14: Arrive back in London for your transfer back to college.





# ACCOMMODATION & LIFESTYLE

Life in Africa

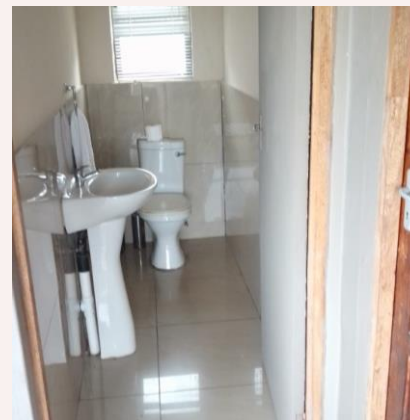




# ACCOMMODATION & LIFESTYLE



## Bundu Camp

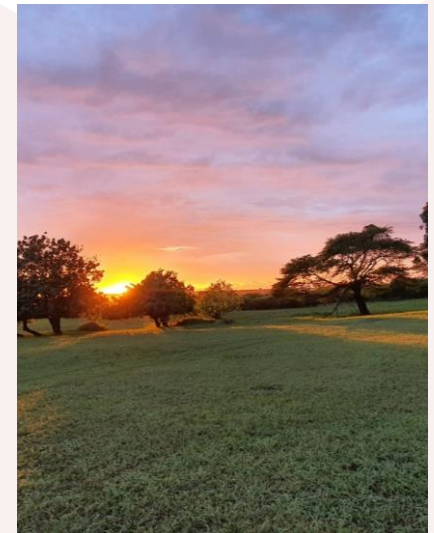




# ACCOMMODATION & LIFESTYLE

AFRICA

## Bundu Camp



ANY QUESTIONS?

[INFO@GAPAFRICAPROJECTS.COM](mailto:INFO@GAPAFRICAPROJECTS.COM) | +44 (0)207 1937819

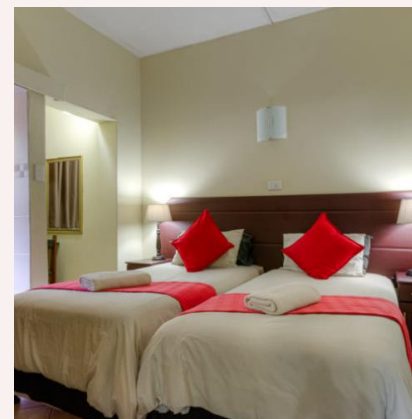
PROEJCT INFORMATION PACK 20



# ACCOMMODATION & LIFESTYLE

AFRICA

## St Lucia



ANY QUESTIONS?

INFO@GAPAFRICAPROJECTS.COM | +44 (0)207 1937819

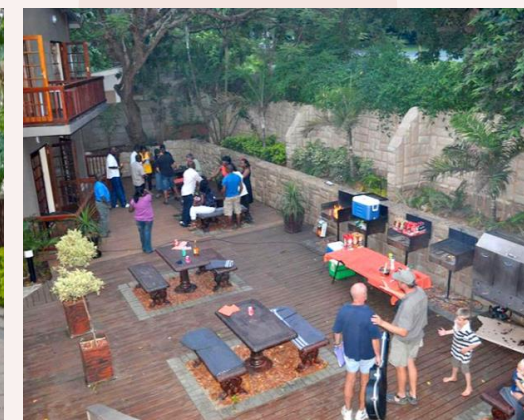
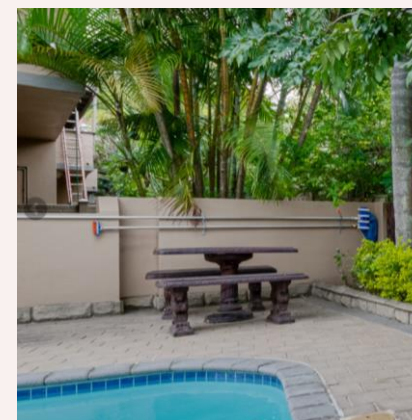
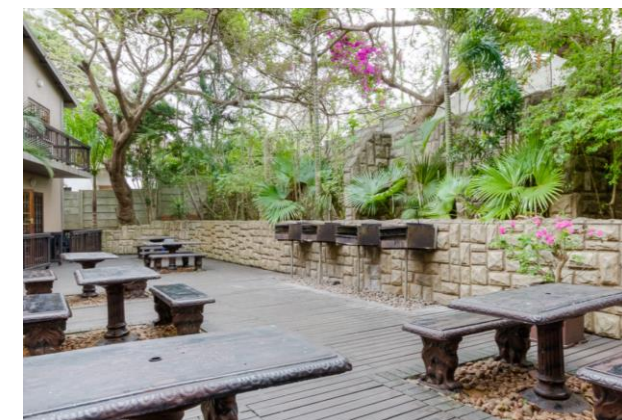
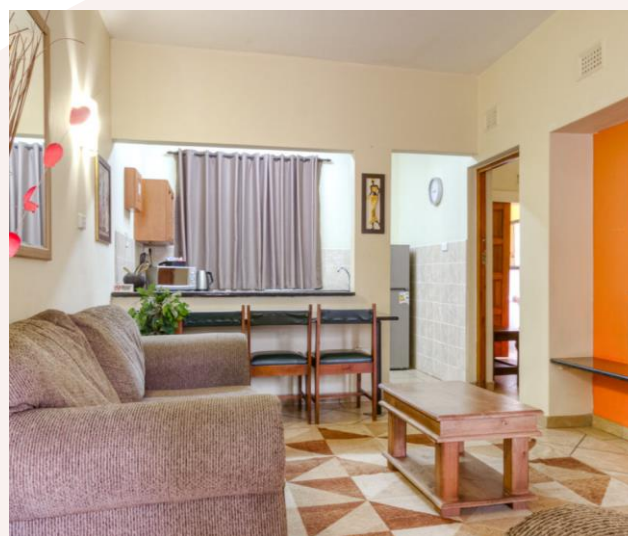
PROEJCT INFORMATION PACK 21



# ACCOMMODATION & LIFESTYLE

AFRICA

## St Lucia



ANY QUESTIONS?

[INFO@GAPAFRICAPROJECTS.COM](mailto:INFO@GAPAFRICAPROJECTS.COM) | +44 (0)207 1937819

PROEJCT INFORMATION PACK 22





# USEFUL INFORMATION

Inclusions/Exclusions &  
Recommended Kit List





# WHAT'S INCLUDED

AFRICA

## What is included?

- Flights
- Transfers to/from project
- Accommodation
- Three meals per day unless specified
- All activities as part of the project
- ATOL protection
- Airport meet/greet
- 24/7 In country support



## NOT Included

- Personal Travel Insurance \*
- Meals on travel days – before arriving & after departing from project
- Lunch and Dinner on one day whilst in St Lucia
- Any activities not specified as part of the project
- Visa's/travel documents

\* We recommend that you take out personal travel insurance as soon as your booking is confirmed.



# USEFUL INFORMATION

AFRICA

## Suggested kit list

- Short sleeve shirts
- Long work trousers and shorts  
(Or work trousers with zip-off longs)
- T shirts
- Hiking Boots/comfortable walking shoes to work in every day
- Rain jacket
- Sweatshirt/Fleece (Winter months pack plenty)
- Padded parka jacket/windbreaker - (it can get very cold on an open vehicle - even on a summer evening)
- Daypack rucksack
- Socks
- Hat for sun protection / Warm Hat (winter only)
- Working gloves
- Gloves for warmth (winter only)
- Changes of casual clothes for evenings
- Underwear

- Sandals / comfy shoes to wear after work hours
- Beach towel
- Swimming costume
- Toiletries
- Tick / insect repellent
- Personal medical items & First Aid Kit
- Binoculars
- Sunscreen & Sunglasses
- Water bottle

### Other useful items:

- Good torch
- Camera
- Spare batteries
- Cards/CD's
- Mammal/bird book
- Notebook/diary and pen





**GLOBAL** reach. **ADVENTURE** for all. **PROJECTS** to inspire.

Explore our network of Global Adventure Projects:



[GLOBALADVENTUREPROJECTS.COM](http://GLOBALADVENTUREPROJECTS.COM)

