



# PROJECT INFORMATION PACK

## Bath College



# Entabeni Safari Conservancy

## Vet Nurse Group



GLOBAL reach. ADVENTURE for all. PROJECTS to inspire.

# TRIP OVERVIEW

AFRICA

## Bath College – Booking Reference 4417

### Trip Dates:

7th – 20<sup>th</sup> July 2024

### Flights:

BA057 7<sup>th</sup> July London Heathrow – Johannesburg arriving 8<sup>th</sup> July \*

BA056 20<sup>th</sup> July Johannesburg – London Heathrow arriving 21<sup>st</sup> July \*

\*Always check the flight timings on your final documents

**Baggage Allowance** – 1 piece checked baggage @ 23kgs, 1 piece hand baggage max dimensions

56x45x25 cms

### Project:

Entabeni Safari Conservancy (Vet Nurse Group)

### Trip Cost:

£2395.00 per person

£300.00 deposit

£1047.50 Instalment due 18/03/2024

£1047.50 Balance due 13/05/2024



**AFRICA**

# INDEX

ABOUT ENTABENI 4-6

YOUR PROJECT 7-11

ACCOMMODATION 12-14

USEFUL INFORMATION 15-17





# ABOUT THE PROJECT

The conservation work  
in more detail



# ABOUT ENTABENI

AFRICA

## ENTABENI SAFARI CONSERVANCY

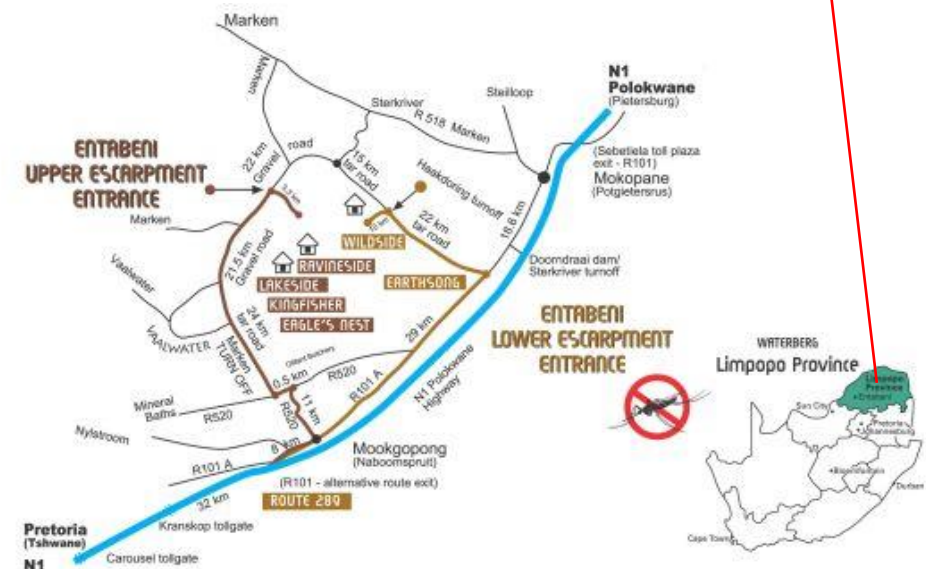
### Location

The Waterberg Wildlife and Veterinary Course – Entabeni is based at the 22,000-hectare Entabeni Safari Conservancy in the Limpopo Province of South Africa.

Located a pleasant 3.5 hour drive from Johannesburg; in the **malaria-free** area of the Waterberg, Limpopo Province

Entabeni is set within a tranquil, natural setting boasting changing vistas, diverse eco-systems and a breath-taking mountainous backdrop. Entabeni is the integration of a 22,000 hectare Big 5 Game Reserve, a resort and luxurious lodges.

It boasts spectacular scenery, with mountains, waterfalls and unspoilt ravines.



## A place that promotes the connection between people and nature

The Waterberg contains pristine habitats, abundant bird and wildlife and has a natural unspoilt beauty. The Waterberg is an escarpment of massive sandstone buttresses and outcrops, incorporating many rivers, streams and wetlands, stretching for 150 km in a long arc.

The Waterberg has many special and unique characteristics which is why UNESCO approved the area for biosphere reserve status in 2001.

The Waterberg is a critical conservation area for; African wild dogs, with the last free-roaming pack in South Africa; black and white rhino, with the third largest population within South Africa; and the Cape Vulture, with the largest colony of 800 breeding pairs.





## WATERBERG WILDLIFE AND VETERINARY COURSE – ENTABENI

This course provides the opportunity for hands-on practical wildlife experience for pre-vet/vet nurses/technicians or those studying in the veterinary field.

Based at the reserve's student camp working directly with the monitoring team; this department runs and manages the day-to-day decisions and monitoring of the wildlife and ecosystem of the reserve.

The team and their work are crucial to the management and welfare of all wildlife on the reserve, as they monitor the animals' conditions, herd structures, locations and behaviours. Time will be spent working with the reserve's veterinarian and other local wildlife vets with whom the team work.



## Course Fundamentals and Structure

- Gain understanding of wildlife research and management that govern veterinary practices on reserve
- A Wildlife Vet's role and responsibilities
- Expose participants to behind-the-scenes wildlife conservation and veterinary work
- Immobilisation and capture techniques used for various wildlife species
- Rhino protection through Veterinary Management
- Conservation Research
- Wildlife management and conservation challenges
- Appreciate the importance of herd health and intensive wildlife breeding
- Gain experience in a variety of veterinary wildlife and conservation working environments
- Vegetation types suitable for wildlife
- Tracks and tracking of Big Five
- Waterberg Wild Dog Project
- Rhino rehabilitation



# ABOUT THE PROJECT

AFRICA

## Course Fundamentals and Structure

### WEEK 1

Introduction to Entabeni Safari Conservancy and Research Projects

Introduction to Wildlife Veterinary work in the Context of African Wildlife (Dr Zoe Glyphis – Local Wildlife Vet) – 1 Day

Rhino orphanage – assist with orphaned rhino calves

Time spent with research team conducting conservation activities – 4 Days

### Week 2

Time spent with research team conducting conservation activities – 3 Days

Further insight into Wildlife Veterinary work (Dr Pierre Bester) – 1 Day

Build up to possible intervention and planning

Specialist Wildlife Vet to conduct intervention with group\*\* (Dr Pierre Bester) – 1 Day

*\*\* Interventions take place if required*

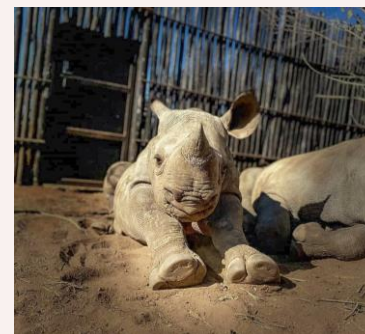


## The Rhino Orphanage

The Rhino Orphanage was the first-ever specialised, non-commercial centre dedicated to the rescue, rehabilitation, raising and release of orphaned rhinos back into the wild.

Although newborn rhinos can weigh up to 50kgs, they are essentially “helpless” and require protection so that they may survive and ultimately thrive.

Rhino calves and rhino mothers are closely bonded. Rhino young are fiercely protected by their mothers in the wild, so when a rhino mother is killed, the rhino orphan becomes particularly vulnerable, and their longevity is endangered. Under normal circumstances, rhino calves will stay with their mothers for around 3 years. For this reason, the rhino orphans in their care typically require the same intensity and timeframe of nurturing from the carers.





# ABOUT THE PROJECT

AFRICA

## Dr Pierre Bester – Wildlife Veterinarian

Rhino orphanage veterinarian, Dr Pierre Bester has a mixed animal practice treating large and small domestic animals as well as wildlife. The main scope of his work includes the immobilisation, treatment, and translocation of African wildlife, including megaherbivore: rhinos and elephants.

He has been involved with the immobilisation and translocation of thousands of rhinos, as well as countless other species.







# Entabeni Safari Conservancy

Accommodation & Lifestyle



## Entabeni Research Camp

The student camp is in the middle of the reserve and consists of modern shared accommodation units.

The one-bedroom units have a lounge/study area. Two to three students accommodated per bedroom unit.

There is a communal washing machine for students to do their laundry, as well as an outdoor communal living space for relaxation.

Two sets of linen and towels are provided per student for the entire period of stay.

All meals are included; there is a communal kitchen where food will be prepared in groups.

Some days lunch will be taken at camp, other days lunch will be brought into the field as a picnic.

Evenings are spent at leisure around the campfire.

Sunday will be an off day to 'chill' in camp or do extra activities.

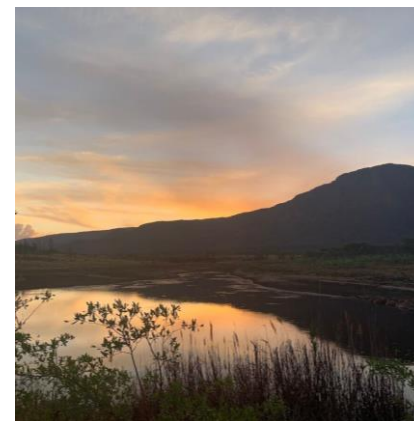




# PHOTO GALLERY



## Entabeni – South Africa







# USEFUL INFORMATION

Inclusions/Exclusions  
Recommended Kit List

# WHAT'S INCLUDED

AFRICA

## What is included?

- Flights
- Transfers to/from project
- Accommodation
- Three meals per day
- All activities as part of the project
- ATOL protection
- Airport meet/greet
- 24/7 In country support



## NOT Included

- Personal Travel Insurance \*
- Meals on travel days – before arriving & after departing from project
- Any activities not specified as part of the project
- Weekend activities
- Visa's/travel documents
- Tips

\* We recommend you take out insurance as soon as your booking is confirmed



## Suggested kit list

- Short sleeve shirts
- Long work trousers and shorts (Or work trousers with zip-off longs)
- T-shirts
- Hiking Boots/comfortable walking shoes to work in every day
- Rain jacket
- Sweatshirt/Fleece (Winter months pack plenty)
- Padded parka jacket/windbreaker – warm (it can get very cold on an open vehicle – even on a summer evening)
- Daypack rucksack
- Socks
- Hat for sun protection / Warm Hat (in winter only)
- Gloves for warmth (in winter only)
- Changes of casual clothes for evenings
- Underwear
- Sandals / comfy shoes to wear after work hours

- Toiletries
- Tick / insect repellent
- Binoculars
- Torch/headlamp
- Water bottle
- Personal medical items/First Aid Kit
- Sunscreen

### Other useful items:

- Camera
- Spare batteries
- Cards/Music
- Mammal/bird book
- Notebook/diary and pen



GLOBAL reach. ADVENTURE for all. PROJECTS to inspire.

Explore our network of Global Adventure Projects:



[GLOBALADVENTUREPROJECTS.COM](http://GLOBALADVENTUREPROJECTS.COM)

