



PROJECT INFORMATION PACK

Warwickshire College



Waterberg Wildlife & Veterinary Course Entabeni



GLOBAL reach. ADVENTURE for all. PROJECTS to inspire.

TRIP OVERVIEW

AFRICA

Warwickshire College – Booking Reference 4491

Trip Dates:

23rd June – 6th July 2024

Flights:

BA055 23rd June London Heathrow – Johannesburg arriving 24th June *

BA056 6th July Johannesburg – London Heathrow arriving 7th July *

*Always check the flight timings on your final documents

Baggage Allowance – 1 piece checked baggage @ 23kgs, 1 piece hand baggage max dimensions 56x45x25 cms

Project:

Waterberg Wildlife & Veterinary Course (Vet Nurse Group)

Trip Cost:

£2395.00 per person

£300.00 deposit

£1047.50 Instalment due 04/03/2024

£1047.50 Balance due 29/04/2024

AFRICA

INDEX

ABOUT ENTABENI	4-6
ABOUT THE PROJECT	7-11
ACCOMMODATION & LIFESTYLE	12-14
USEFUL INFORMATION	15-17





ABOUT THE PROJECT

The conservation work
in more detail

ABOUT ENTABENI

AFRICA

ENTABENI SAFARI CONSERVANCY

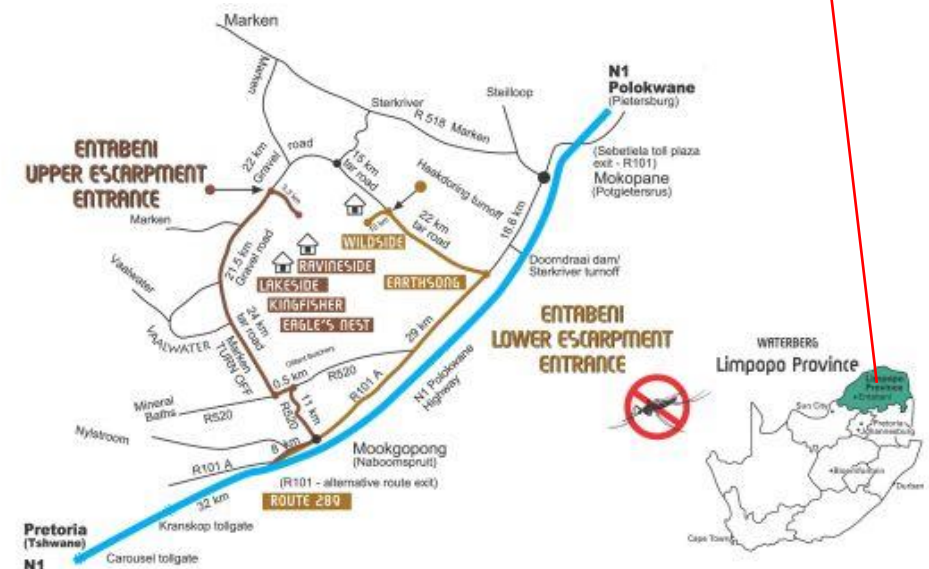
Location

The Waterberg Wildlife and Veterinary Course – Entabeni is based at the 22,000-hectare Entabeni Safari Conservancy in the Limpopo Province of South Africa.

Located a pleasant 3.5 hour drive from Johannesburg; in the **malaria-free** area of the Waterberg, Limpopo Province

Entabeni is set within a tranquil, natural setting boasting changing vistas, diverse eco-systems and a breath-taking mountainous backdrop. Entabeni is the integration of a 22,000 hectare Big 5 Game Reserve, a resort and luxurious lodges.

It boasts spectacular scenery, with mountains, waterfalls and unspoilt ravines.



A place that promotes the connection between people and nature

The Waterberg contains pristine habitats, abundant bird and wildlife and has a natural unspoilt beauty. The Waterberg is an escarpment of massive sandstone buttresses and outcrops, incorporating many rivers, streams and wetlands, stretching for 150 km in a long arc.

The Waterberg has many special and unique characteristics which is why UNESCO approved the area for biosphere reserve status in 2001.

The Waterberg is a critical conservation area for; African wild dogs, with the last free-roaming pack in South Africa; black and white rhino, with the third largest population within South Africa; and the Cape Vulture, with the largest colony of 800 breeding pairs.



ABOUT THE PROJECT

AFRICA

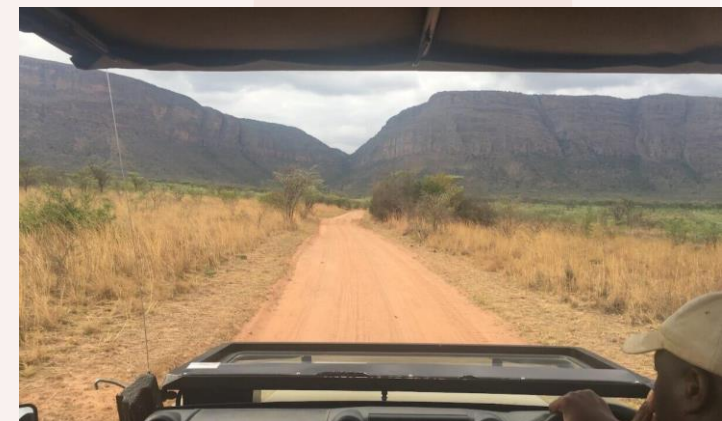
WATERBERG WILDLIFE AND VETERINARY COURSE – ENTABENI

This course provides the opportunity for hands-on practical wildlife experience for pre-vet/vet nurses/technicians or those studying in the veterinary field.

Based at the reserve's student camp working directly with the monitoring team; this department runs and manages the day-to-day decisions and monitoring of the wildlife and ecosystem of the reserve.

The team and their work are crucial to the management and welfare of all wildlife on the reserve, as they monitor the animals' conditions, herd structures, locations and behaviours.

Time will be spent working with the reserve's veterinarian and other local wildlife vets with whom the team work.



Course Fundamentals and Structure

- Gain an understanding of wildlife research and management that govern veterinary practices on a reserve
- A wildlife Vet's role and responsibilities
- Expose participants to behind-the-scenes wildlife conservation and veterinary work
- Immobilisation and capture techniques used for various wildlife species
- Rhino protection through Veterinary Management
- Conservation Research
- Wildlife management and conservation challenges
- Appreciate the importance of herd health and intensive wildlife breeding
- Gain experience in a variety of veterinary wildlife and conservation working environments
- Vegetation types suitable for wildlife
- Tracks and tracking of Big Five
- Waterberg Wild Dog Project
- Rhino rehabilitation

ABOUT THE PROJECT

AFRICA

Course Fundamentals and Structure

WEEK 1

Introduction to Entabeni Safari Conservancy and Research Projects

Introduction to Wildlife Veterinary work in the Context of African Wildlife (Dr Zoe Glyphis – Local Wildlife Vet) – 1 Day

Rhino orphanage – assist with orphaned rhino calves

Time spent with research team conducting conservation activities – 4 Days

WEEK 2

Time spent with research team conducting conservation activities – 3 Days

Further insight into Wildlife Veterinary work (Dr Pierre Bester) – 1 Day

Build up to possible intervention and planning

Specialist Wildlife Vet to conduct intervention with group** (Dr Pierre Bester) – 1 Day

*** Working with wildlife is unpredictable and all the activities are only undertaken when required*

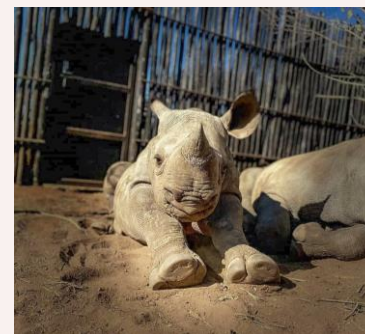


The Rhino Orphanage

The Rhino Orphanage was the first-ever specialised, non-commercial centre dedicated to the rescue, rehabilitation, raising and release of orphaned rhinos back into the wild.

Although new-born rhinos can weigh up to 50kgs, they are essentially “helpless” and require protection in order that they may survive and ultimately thrive.

Rhino calves and rhino mothers are closely bonded. Rhino babies are fiercely protected by their mothers in the wild, so when a rhino mother is killed, the rhino orphan becomes particularly vulnerable and their longevity is endangered. Under normal circumstances, rhino calves will stay with their mothers for around 3 years. For this reason, the rhino orphans in their care typically require the same intensity and timeframe of nurturing from the carers.



ABOUT THE PROJECT

AFRICA

Dr Pierre Bester – Wildlife Veterinarian

Rhino orphanage veterinarian, Dr Pierre Bester has a mixed animal practice where the scope of his work includes the immobilisation, treatment, and translocation of African wildlife, including rhino and elephants.

He has been involved with the immobilisation and translocation of thousands of rhinos, as well as countless other species.





Entabeni Safari Conservancy

Accommodation & Lifestyle

Entabeni Research Camp

The student camp is in the middle of the reserve and consists of modern shared accommodation units.

The one-bedroom units have a lounge/study area. Two to three students are accommodated per bedroom unit.

There is a communal washing machine for students to do their laundry, as well as an outdoor communal living space for relaxation.

Two sets of linen and towels are provided per student for the entire period of stay.

All meals are included and there is a communal kitchen where food will be prepared in groups.

Some days lunch will be taken at camp, other days lunch will be taken into the field as a picnic.

Evenings are spent at leisure around the campfire.

Sunday will be an off day to 'chill' in camp or do extra activities.

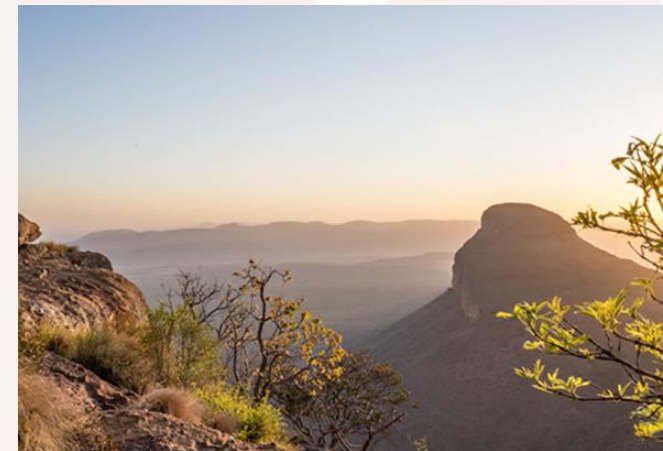
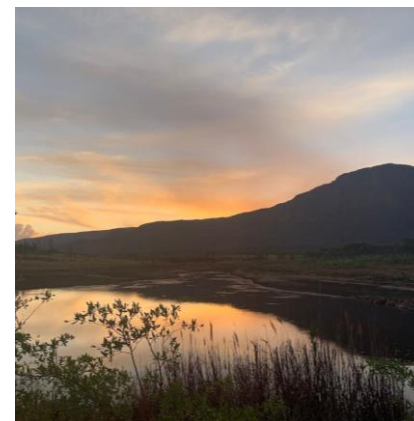


PHOTO GALLERY



Entabeni – South Africa





USEFUL INFORMATION

Inclusions/Exclusions
Recommended Kit List

WHAT'S INCLUDED

AFRICA

What is included?

- Flights
- Transfers to/from project
- Accommodation
- Three meals per day
- All activities as part of the project
- ATOL protection
- Airport meet/greet
- 24/7 In country support



NOT Included

- Personal Travel Insurance *
- Meals on travel days – before arriving & after departing from project
- Any activities not specified as part of the project
- Weekend activities
- Visa's/travel documents
- Tips

* We recommend you take out insurance as soon as your booking is confirmed

Suggested kit list

- Short sleeve shirts
- Long work trousers and shorts (Or work trousers with zip-off longs)
- T-shirts
- Hiking Boots/comfortable walking shoes to work in every day
- Rain jacket
- Sweatshirt/Fleece (Winter months pack plenty)
- Padded parka jacket/windbreaker – warm (it can get very cold on an open vehicle – even on a summer evening)
- Daypack rucksack
- Socks
- Hat for sun protection / Warm Hat (in winter only)
- Gloves for warmth (in winter only)
- Changes of casual clothes for evenings
- Underwear
- Sandals / comfy shoes to wear after work hours

- Toiletries
- Tick / insect repellent
- Binoculars
- Torch/headlamp
- Water bottle
- Personal medical items/First Aid Kit
- Sunscreen

Other useful items:

- Camera
- Spare batteries
- Cards/Music
- Mammal/bird book
- Notebook/diary and pen



GLOBAL reach. ADVENTURE for all. PROJECTS to inspire.

Explore our network of Global Adventure Projects:



GLOBALADVENTUREPROJECTS.COM

