



USP College Project Information Pack



Zulu Land Conservation Field Trip

AFRICA

GLOBAL reach. **ADVENTURE** for all. **PROJECTS** to inspire.

AFRICA

INDEX

ABOUT THE PROJECT 3-9

PROJECT DETAILS 10-24

ACCOMMODATION & LIFESTYLE 25-29

USEFUL INFORMATION 30-32





AFRICA

ABOUT THE PROJECT

Overview and location
of the project

ABOUT THE PROJECT

AFRICA

Zulu Land Conservation Research

Our academic team and qualified rangers at the Zulu Land Conservation Project offer a bespoke course to each institution dependent on their own personal objectives and learning needs.

We set out the basis of the trip, comprising of a 9-day academic module split between the two conservation reserves plus the 3-day coastal module.



A full 9-hour day will be planned but will vary from day to day depending on the days task and research goals.

Project split and duration are as follows:

12 Day Itinerary

Days 1 – 6

Nambiti Big 5 Conservation Research

Days 6 – 10

Zingela Wilderness Conservation and Adventure Activities

Days 10 – 12

St Lucia Add-on Coastal Module

ABOUT THE PROJECT

AFRICA

Nambiti Game Reserve (Days 1 – 6)

Nambiti Game Reserve is a magnificent 23,000 acres of unspoiled wilderness boasting the Big 5 and incredible biodiversity (grasslands, riverine bush, savannah and thornveld) offering unprecedented diversity of wildlife.



ABOUT THE PROJECT

AFRICA

Zingela River Safari (Days 6 – 10)

Zingela Wildlife Reserve covers 12,500 acres of predator free, pristine African bushveld. You will have the opportunity to be involved with the research that takes place at the property;. You will also have the chance to participate in a host of adventurous activities during your stay such as mountain biking, rafting and abseiling.



ABOUT THE PROJECT

AFRICA

St Lucia Wetlands (Days 10 – 12)

St. Lucia is situated on the northern side of the estuary, the largest in Southern Africa and is totally surrounded by the Greater St. Lucia Wetlands Park and World Heritage Site. The area is famous for its wetlands and is a fantastic opportunity to witness Crocodiles and Hippos in their natural environment.

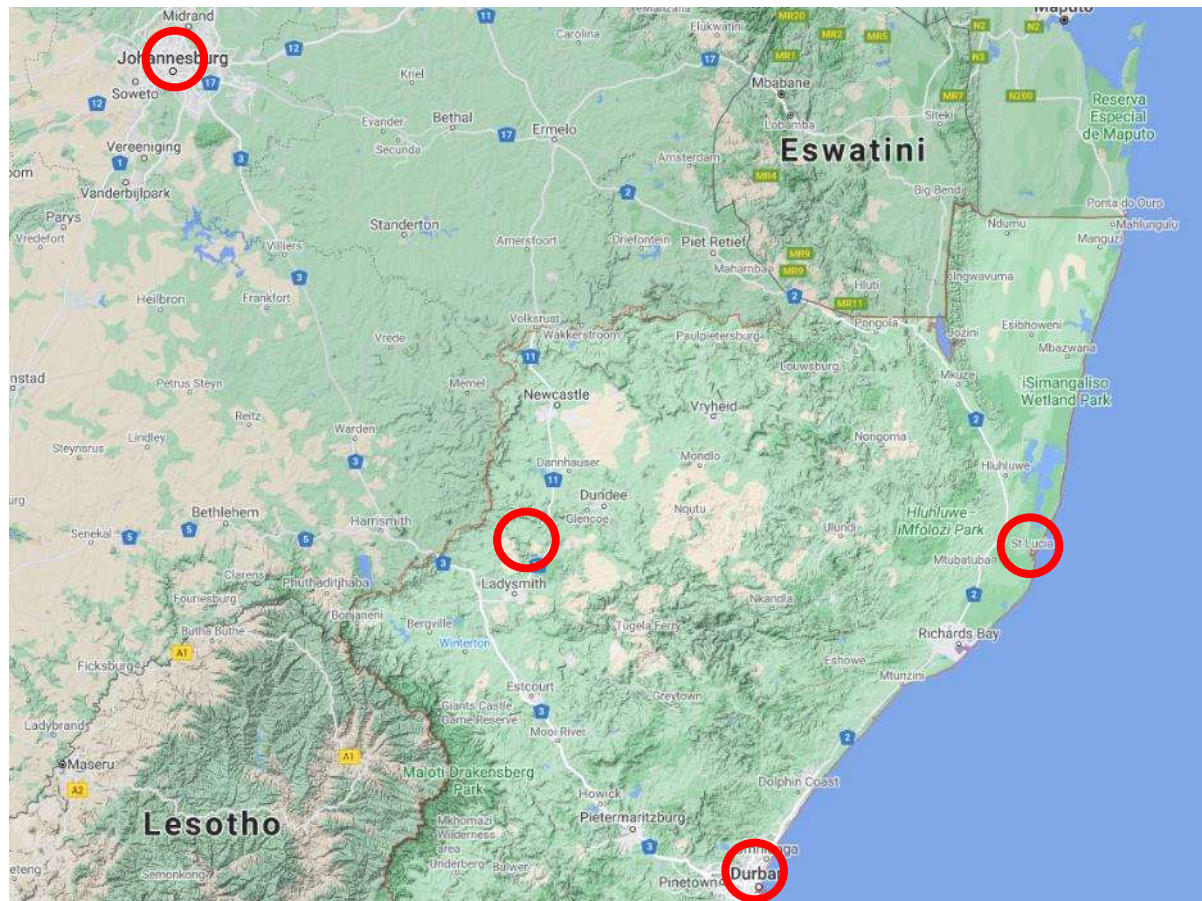


ABOUT THE PROJECT

AFRICA

Zulu Land Conservation Project- Location

- South Africa a world leader in conservation
- Malaria free KwaZulu Natal



Your Conservation Programme

Students will be taught and work alongside the field guides and conservation team. The following examples depict the day to day activities that may be undertaken as part of the project at Nambiti and Zingela Reserves.

- **Alien Vegetation Control / Reserve Maintenance**
- **Spatial Distribution and Habitat use of species**
- **Use of Telemetry Tracking**
- **Elephant Monitoring / Population Study**
- **Rhino Monitoring – Awareness and Anti-Poaching**
- **Monitoring Herbivore Condition & Health**
- **Camera Trapping**
- **Habitat and Prey Selection of Predators**
- **Research: Leopard | Hyena | General**
- **Birds in Reserve Census – ID and Migrations**
- **Educational Bush Walks – Ecology & Botany**
- **Tracks, Signs and Spoor**
- **Reserve Sleep Out – Wilderness Experience**
- **Cultural Home Stay**
- **Community Development**



AFRICA

PROJECT CONTENT

Our conservation work in
more details

Bespoke Research Projects

There is also scope to include time where the students are able to work on their own research programmes.

Students can use this as their individual research component and are able to create group projects.

All research projects are aligned with the game reserve management objective and can be broad and dynamic. The research will benefit both the student and the game reserve. Many research programmes allow for hands-on experience where life skills, not available in their present environment, are encouraged and taught. Once a project subject is chosen, a project proposal should be developed and materials and methods can be discussed. These projects must be carefully prepared in advance of the trip so that the reserve can put all the necessary requirements in place so the research can run as smoothly and efficiently as possible.

Once you have chosen your specific area of interest, we can provide examples of project titles within that area of research.



Bespoke Research Projects

Small Predator Management – All species need to be identified, mainly via camera trapping. A catalogue of animals is being made so we can identify as many individuals as possible on the reserve. More information is desperately required by the reserve, especially in relation to prey species.

Large Predator Management – Lion, Leopard, Spotted Hyena, Brown Hyena and Caracal have an impact that needs to be identified and recorded. Mapping their home ranges and activity.

Conservation Management – Aspects of the physical management of the environment and other supporting infrastructure needed to manage a game reserve. Fencing, road and tracks, erosion, planning and mapping.

Mega Herbivore Management – Feeding habits and their impact on the eco system need to be reported on.

Aquatic Systems – river, springs and dams – The Tugela river runs through the heart of Zinegal and there are several research projects including eel migration.



Bespoke Research Projects

Insectavora – including spiders – Only 21 are recorded on the reserve when thousands of species occur. Insects are important environmental indicators so they need to be identified and monitored.

Biodiversity heritage – How do we manage the ecosystem beyond the fence line of the game reserve

Alien Plant Management – Invasive plants play havoc with natural habitats; infestation need to be investigated, mapped out and recommendation made for their removal.

Amphibians – Many of which are threatened or endangered, the reserve has a check list of the species but little is known about their status and distribution

Geology and Soils – Current land use practices need their impacts monitored and recorded.

Small and Medium herbivore management – Grazing and browsing impacts, especially near to artificial water points. Impacts of hunting and sale of game.

Environmental education – For children both in local schools and abroad, an adult education course is needed.



Bespoke Research Projects

Black Rhino Project – Black Rhino populations are under threat throughout Africa with the total number having plummeted from approximately 65000 to 2400. In recent years successful conservation efforts have resulted in numbers rising again to a current population of approximately 3000.

Overpopulation can negatively impact on population growth and so breeding populations have to be carefully established and controlled in a suitable habitat. Whilst on the project you will have the chance to help restore the ideal habitat for the black rhino; by eradicating the plant species of *chromolaena odorata*. You will also take part in patrols looking for signs of poaching and learn to track the rhino as well as identify birds, plants and animal tracks.

Rhino tracking is essential, the information must be recorded daily so the reserve can keep an eye on their movement patterns, their physical condition and their associations with other animals and other rhino; there is a permanent team dedicated to this on the reserve and you will be able to join them.



Bespoke Research Projects

Lion and Cheetah Monitoring – You will learn how to set camera traps and identify individual animals as well as recording their movements and habits.

Giraffe Research Project – In the past five years, considerable progress has been made in compiling and producing a species-wide assessment of population size and distribution. The continued growth of these populations however is limited by the ability of that ecosystem to support a particular number of Giraffes due to space, water and forage availability (i.e. limited carrying capacity).

Over population of Giraffe can have deleterious effects on indigenous flora which may in turn adversely affect other animals within the conservation area; it is necessary to calculate a sustainable carrying capacity for a specific area.

Through our ongoing Giraffe Conservation Project we aim to gather all the data necessary for generating a conservation plan for our Giraffe. This will help in planning for the future expansion of conservation areas or for reducing the population size through game capture.



Bush Walks and Ecology Trails

One of the unique aspects of the Zulu Land Conservation project is the ability to utilise the reserves for walking trails and ecology lessons.

Groups will be accompanied by professional guides as they navigate through the reserve observing the smaller aspects of the flora and fauna that the African Bush has to offer.



Community Projects – Zulu Culture

A chance for academic groups to meet the locals living around the game reserves

A chance to meet chiefs and see traditional Zulu culture first hand

Projects: Move Africa & Rhino Art



Wilderness Trail Experience

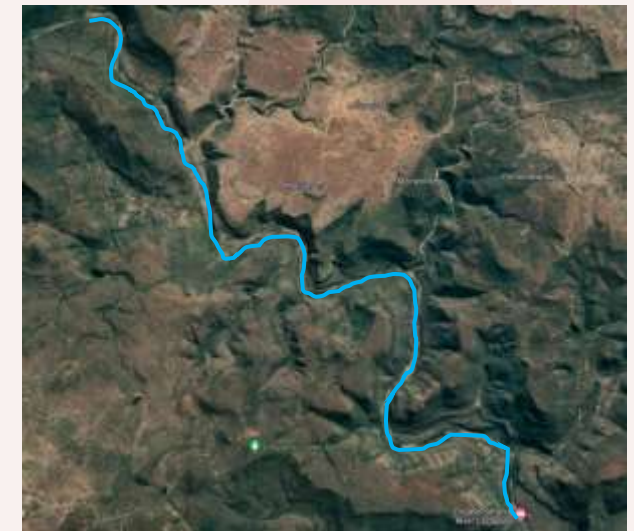
As part of your conservation experience, groups will have the opportunity to take part in a breath-taking wilderness trail between Nambiti and Zingela.

Those choosing the adventurous route* will embark on an 7km hiking trail from Nambiti to a designated point on the Tugela River.

From there, our river guides will meet the group and assist to navigate the 8km stretch of river into Zingela with an overnight stop at a bush camp on the banks of the Tugela River.

A true Adventure!!!

* A road transfer will also be available between reserves for anyone who doesn't wish to participate in the trail.



Adventure Activities – Zingela

White Water Rafting & Kayaking

There is an excellent 20km stretch of rapids and pools in this section of the Tugela Canyon including the intimidating Washing Machine and Finger Rock rapids.

Mountain Biking

The reserve offers some wonderful single track riding interspersed with rugged 4x4 vehicle bush tracks.

Abseiling & Rock Climbing

The cliffs overlooking the Tugela Canyon provide dizzying abseil sites. Face your fear or watch other participants step over the edge. Registered, experienced guides are there to provide reassurance and safety.





AFRICA

2 DAY – COASTAL EXCURSION

St Lucia – Coastal Adventure

ST LUCIA – COASTAL ADVENTURE

AFRICA

Estuary Hippo and Crocodile Tour



ANY QUESTIONS?

INFO@GAPAFRICAPROJECTS.COM | +44 (0)207 1937819

PROJECT PRESENTATION 21

ST LUCIA – COASTAL ADVENTURE

AFRICA

Cape Vidal Nature Reserve and Snorkeling



ANY QUESTIONS?

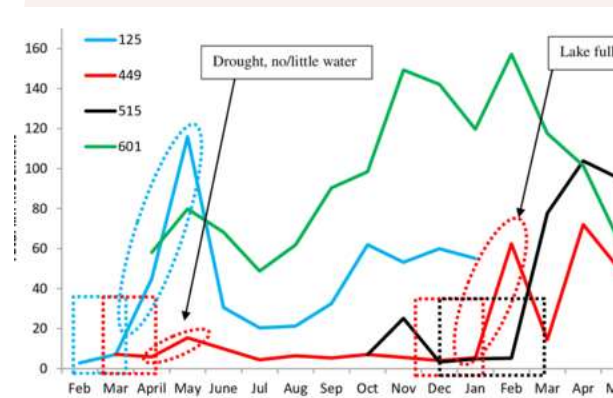
INFO@GAPAFRICAPROJECTS.COM | +44 (0)207 1937819

PROJECT PRESENTATION 22

ST LUCIA – COASTAL ADVENTURE

AFRICA

Crocodile Research Centre



ANY QUESTIONS?

INFO@GAPAFRICAPROJECTS.COM | +44 (0)207 1937819

PROJECT PRESENTATION 23

ST LUCIA – COASTAL ADVENTURE

AFRICA

Whale Watching (Additional)



ANY QUESTIONS?

INFO@GAPAFRICAPROJECTS.COM | +44 (0)207 1937819

PROJECT PRESENTATION 24



AFRICA

ACCOMMODATION & LIFESTYLE

Life in the African Bush

ACCOMMODATION

AFRICA

Game Reserve Camps – Nambiti

In keeping with the Safari Adventure theme, groups are accommodated on the reserve in comfortable safari tents, with communal hot and cold showers and regular flushing toilets. All meals are provided in a communal dining room. If students opt to sleep out there are basic camps around the reserve that can be used for sleep outs; Sleep out under the stars and learn how to make a fire and cook on it!



ACCOMMODATION

AFRICA

Game Reserve Camps – Zingela



ANY QUESTIONS?

INFO@GAPAFRICAPROJECTS.COM | +44 (0)207 1937819

PROJECT PRESENTATION 27

ACCOMMODATION

AFRICA

St Lucia Coastal Accommodation

Guest House style accommodation is provided during your time in St Lucia. Rooms are shared and have communal ablutions.

The guest house is located in the heart of St Lucia's Main Street and is the ideal location to explore the surrounding areas.



ACCOMMODATION

AFRICA

Food at the project

Three meals are provided a day prepared by the kitchen staff.

Breakfasts will consist of toast and cereals; lunch may include pasta, wraps, burgers, stir fry; dinners include meat, fish and vegetables with rice, potatoes or pasta.

On weekends a braai (BBQ) is often organised. Tea, coffee and fruit is available all day from the volunteer area.

Please advise us of any dietary requirements in advance so we can ensure that you are adequately catered for.





AFRICA

USEFUL INFORMATION

Inclusions/Exclusions &
Recommended Kit List

BOOKING YOUR ADVENTURE

AFRICA

Proposed trip dates:

Depart UK: 9th July | Arrive SA: 10th July 2023

Depart SA: 22nd July | Arrive UK: 23rd July 2023

Trip Cost

£2,295 per person

Key Deadlines

- Return online application using the QR code or link below
- Deposit of £300 to confirm placement within two weeks of provisional booking to confirm place
- Instalment payment of 50% due 16 weeks before departure
- Balance payment due 8 weeks before departure
- E tickets will be issued 2 weeks prior to departure and emailed to students

What is Included?

- Flights
- Transfers to/from project
- Accommodation
- Three meals per day
- All activities as part of the project
- ATOL protection
- Airport meet/greet
- 24/7 In country support

Not Included

- Personal Travel Insurance *
- Meals on travel days – before arriving & after departing from project
- Any activities not specified as part of the project
- Visa's/travel documents

* We recommend that you take out personal travel insurance as soon as your booking is confirmed.



Suggested kit list

- Short sleeve shirts
- Long work trousers and shorts
(Or work trousers with zip-off longs)
- T shirts
- Hiking Boots/comfortable walking shoes to work in every day
- Rain jacket
- Sweatshirt/Fleece (Winter months pack plenty)
- Padded parka jacket/windbreaker – warm
(it can get very cold on an open vehicle – even on a summer evening)
- Daypack rucksack
- Sleeping Bag – for sleep out / camping in summer months
(weather dependent)
- Socks
- Warm Hat (in winter only) / Hat for sun protection
(all year round)
- Working gloves
- Gloves for warmth (in winter only)

- Changes of casual clothes for evenings
- Underwear
- Sandals / comfy shoes to wear after work hours
- Bath towel
- Beach towel
- Swimming costume
- Toiletries
- Tick / insect repellent

Other useful items:

- Binoculars
- Good torch
- Water bottle
- Camera
- Spare batteries
- Sunglasses
- Personal medical items
- Cards/CD's
- Sunscreen
- Mammal/bird book
- Notebook/diary and pen



GLOBAL reach. **ADVENTURE** for all. **PROJECTS** to inspire.

Explore our network of Global Adventure Projects:



GLOBALADVENTUREPROJECTS.COM

