



**GAP  
AFRICA  
PROJECTS**

**SHAMWARI GROUP EXPEDITION  
2020  
Q&A Presentation**



# CONSERVATION GROUP EXPERIENCE

## Where does it take place?

- South Africa a world leader in conservation
- Privately owned Shamwari Game Reserve
- Malaria free Eastern Cape



About Shamwari

Your Project

Weekend Excursion

Documents

Travel Details

Pre Departure Info

GAP  
AFRICA  
PROJECTS



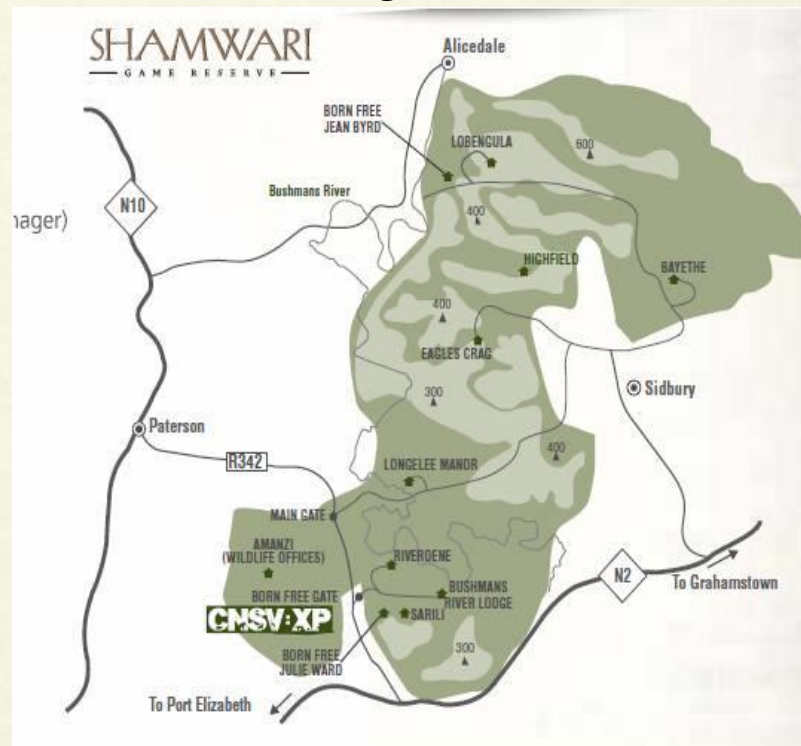


# CONSERVATION GROUP EXPERIENCE



## About Shamwari Game Reserve

- 24,000 Hectare Privately Owned Game Reserve
- A pioneer in conservation in Southern Africa
- Award winning conservation team including:
  - Wildlife Vets
  - Ecologists
  - Anti Poaching
- Home to Born Free
- Animal Rehab Centre
- Breeding Centre



About Shamwari

Your Project

Weekend Excursion

Documents

Travel Details

Pre Departure Info

GAP  
AFRICA  
PROJECTS





# CONSERVATION GROUP EXPERIENCE



## Shamwari Game Reserve Today



About Shamwari

Your Project

Weekend Excursion

Documents

Travel Details

Pre Departure Info

GAP  
AFRICA  
PROJECTS

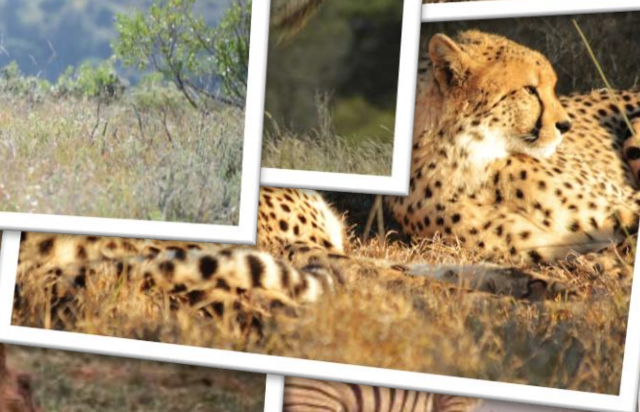




# CONSERVATION GROUP EXPERIENCE



Home to over 60 Species



About Shamwari

Your Project

Weekend Excursion

Documents

Travel Details

Pre Departure Info

GAP  
AFRICA  
PROJECTS





# CONSERVATION GROUP EXPERIENCE



## Your Conservation Project

- General Reserve Maintenance
- Alien Plant Eradication / Land Management
- Game Capture and Relocation
- Possible Veterinary Interaction/Game Capture
- Spatial Distribution/habitat use of species
- Habitat and Prey Selection of Lions
- Hands on Work at Rehabilitation Centre
- Work at the Born Free Foundation
- General Game Drives and Walks
- Field Skills and Survival Training
- Community Development



About Shamwari

Your Project

Weekend Excursion

Documents

Travel Details

Pre Departure Info

GAP  
AFRICA  
PROJECTS





# CONSERVATION GROUP EXPERIENCE



## Your Accommodation



About Shamwari

Your Project

Weekend Excursion

Documents

Travel Details

Pre Departure Info

GAP  
AFRICA  
PROJECTS





# CONSERVATION GROUP EXPERIENCE



## Weekend Excursion – Canoe and Camping Trail

### Saturday

Kayak 9km Paddle up River  
Lunch  
7km hike to camp  
Traditional Potjie Dinner  
Camp Fire & Star Gazing

### Sunday

Breakfast (Cereal / Yoghurt)  
Kayak 9km Paddle down River



About Shamwari

Your Project

Weekend Excursion

Documents

Travel Details

Pre Departure Info

GAP  
AFRICA  
PROJECTS



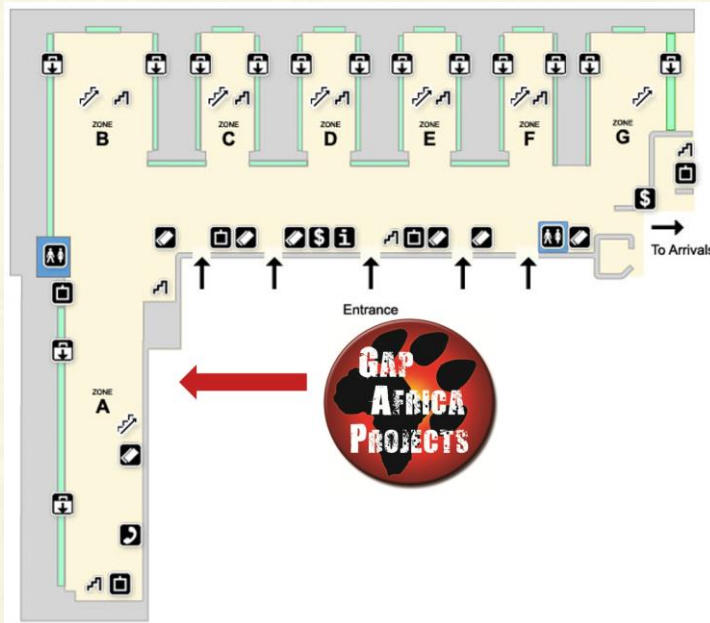


# CONSERVATION GROUP EXPERIENCE



## Departure from London Heathrow Terminal 3 Sunday 29<sup>th</sup> March 2020

**Flight:** VS449 Departure Time: 21:35  
Group Meeting Point at – 18:35



Checked Baggage Allowance: 23KG

Hand Baggage Allowance: 10KG

About Shamwari

Your Project

Weekend Excursion

Documents

Travel Details

Pre Departure Info

GAP  
AFRICA  
PROJECTS





# CONSERVATION GROUP EXPERIENCE

## Arrival in South Africa Monday 30<sup>th</sup> March 2020

LHR JNB VS449 Arrival Time: 09:30

Pass through immigration  
Collect baggage  
Clear customs

Gap Africa Meet and Greet in Arrivals Hall  
Connection Terminal A – Terminal B

**Flight:** BA6241 Departure Time: 11:10 Arrival Time: 12:50  
Johannesburg (JNB) to Port Elizabeth (PLZ)

Meet and Greet at PLZ Arrivals Hall  
Transfer to Shamwari Game Reserve  
Supermarket Stop off



About Shamwari

Your Project

Weekend Excursion

Documents

Travel Details

Pre Departure Info

GAP  
AFRICA  
PROJECTS





# CONSERVATION GROUP EXPERIENCE



## Arrival at Shamwari Game Reserve ETA – 16:00

Meet and Greet by Reserve Staff

Health & Safety Briefing

House Rules and Indemnity Forms

Check in to Accommodation

Opportunity to relax and settle in



About Shamwari

Your Project

Weekend Excursion

Documents

Travel Details

Pre Departure Info

GAP  
AFRICA  
PROJECTS





# CONSERVATION GROUP EXPERIENCE

## Departure from Port Elizabeth Saturday 11<sup>th</sup> April 2020

**Flight:** BA6244 Departure Time: 16:15 Arrival Time: 17:50  
Port Elizabeth (PLZ) to Johannesburg (JNB)

Baggage to be checked through to London Heathrow (LHR)

**Flight:** VS450 Departure Time: 20:25  
Johannesburg (JNB) to London Heathrow (LHR)

## Sunday 12<sup>th</sup> April 2020

VS450 JNB LHR Arrival Time: 06:35 T3



About Shamwari

Your Project

Weekend Excursion

Documents

Travel Details

Pre Departure Info

GAP  
AFRICA  
PROJECTS





# CONSERVATION GROUP EXPERIENCE

## Documents and Flights



### Your e-ticket

#### Travelport ViewTrip™

This Electronic Ticket Receipt has been brought to you by Travelport ViewTrip and your travel provider.  
For the latest information on your travel plans, view your itinerary at [ViewTrip.com](http://ViewTrip.com)

Reservation Number: R33RQ5

[View Electronic Ticket Receipt](#)

Traveler		
Passenger Name	Billing Address	Delivery Address
DELEY, GEORGINA	TRAVEL COUNSELLORS PHENIX	No Address On Record
	TRAVEL HSE	
	CHURCHGATE	
	BOLTON	
	PMB 11TH	

Agency Information	
TRAVEL COUNSELLORS LTD	
Travel House	
Bolton L1 1TH	
UNITED KINGDOM	
Agency Phone: 01204 536 534	TRAVEL COUNSELLORS PLC PHENIX PLTS
Agency ATA Number: 91277892	

e-Ticket Receipt - 932594180522 - VS 001 - 28 Jun 2015 - LHR	Today's Date: 28 May 2015
Ticket Number: 932594180522	Galileo Reservation Number: R33RQ5
	Ticket Issue Date: 27 May 2015

Flight Information					
28 Jun 2015					
Virgin Atlantic Airways Ltd (VS) 001	Economy (C)	Virgin Atlantic Airways Ltd	Confirmation Number: BHEG24		
Depart:	Heathrow (LHR) - Terminal 3	9:05 PM	Fare Basis:	BT	
	London		Not Valid Before:	28 Jun 2015	
Arrive:	Johannesburg (JNB) - Terminal A	9:05 AM	Not Valid After:	28 Jun 2015	
Applies to: LHR - JNB					
Baggage Allowance: 1 Piece Plan					

This is an important document. Make sure that you take it with you when you travel.

## ATOL Certificate

This confirms that your money is protected by the ATOL scheme and that you can get home if your travel company collapses.

This certificate sets out how the ATOL scheme will protect the people named on it for the parts of their trip listed below.

#### Who is protected?

Mr Daniel Alexander

Number of passengers: 1

#### What is protected?

Package holiday to South Africa for 12 days  
28-Jun-15 (08:00) London Heathrow (LHR) Johannesburg (JNB) 21:00:00 + 1 Day  
30-Jun-15 (08:00) Johannesburg (JNB) Port Elizabeth (PE) 11:10:00  
11-Apr-15 (08:00) Port Elizabeth (PE) Johannesburg (JNB) 12:00:00  
11-Apr-15 (08:00) Johannesburg (JNB) London Heathrow (LHR) 20:00:00 + 1 Day

You can find more detailed information on your booking, including price, on the confirmation you will receive from Gap Africa Projects Limited

#### Who is protecting your trip?

Gap Africa Projects Limited ATOL Number 10890 Booking Ref: 4007

#### Your protection

You are protected from when you were given this certificate to the end of your trip.

If Gap Africa Projects Limited stops trading, the passengers named above will either:

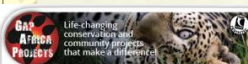
1 complete their trip and return to the UK; or  
2 receive a refund.  
Your protection depends on the terms of the ATOL scheme (available at [www.atol.org.uk](http://www.atol.org.uk)).

If Gap Africa Projects Limited stops trading, you must follow the instructions at [www.atol.org.uk](http://www.atol.org.uk) (where there will be details of arrangements to bring people back to the UK, and information on how people can claim their money back) or you can call (+44) 20 7453 6350.

By issuing this ATOL Certificate, under Regulation 17 of the Civil Aviation (Air Travel Organiser's Licensing) Regulations 2012, Gap Africa Projects Limited confirms that the trip to which it applies is sold in line with the ATOL held by the organiser named above. The ATOL scheme is run by the Civil Aviation Authority and paid for by the Air Travel Trust. To see what that is and what you can expect, together with full information on its terms and conditions go to [www.atol.org.uk](http://www.atol.org.uk). As well as the protection of the ATOL scheme, you have protection under the Package Travel Regulations. For more information see [www.direct.gov.uk](http://www.direct.gov.uk) in the Travel and Transport section.

Unique reference number:	Date of issue:	ATOL Certificate issuer:	ATOL number:	Package sale
4007	16/10/2014	Gap Africa Projects Limited	10890	

Copyright © Civil Aviation Authority. The ATOL Logo is a registered trade mark.  
[Click here to look at all editable fields](#)



16/07/2017	Check in for your flight at the South African Airways Check in Desk, London Heathrow, terminal 2	18:00
	Depart London Heathrow	SA239
	17/07/2017	11:00
	Arrive Johannesburg International Airport, Terminal A	09:00
Upon arrival please clear immigration and collect your baggage to pass through Customs		
A member of the Gap Africa Projects ground team will meet you at International Arrivals Hall and take you through to Domestic Departures, terminal B. Please look out for our Meet and Greet Board.		
	Drop off baggage at SAA bag drop - Domestic Terminal B	SA405
	Depart Johannesburg	10:45
	Arrive Port Elizabeth Airport	12:30
Upon arrival you will be met by a representative from Bunden Tours and transferred to Shamwari Game Reserve		
Shamwari Group Conservation Experience - 14 DAYS		
31/07/2017	Today is the final day of your placement and you will be transferred to Port Elizabeth Airport	11:00
	Check in for your flight at the SAA Check in Desk	SA430
	Depart Port Elizabeth	14:35
	Arrive Johannesburg Terminal B	16:30
Upon arrival please make your way to Terminal A International Departures		
	Depart Johannesburg	SA234
	18/08/2017	19:55
	Arrive London Heathrow, terminal 2	06:25

#### Important Travel Advice

##### Under 18 Visa Requirements.

If you are aged under 18, whether travelling alone or within a group you must adhere to the regulations set for minors entering the republic of South Africa. <http://www.dfa.gov.za/index.php?c=services/travelling-with-children>

##### Names and spellings.

It is crucial that they match what is printed on your passport. If there is a mistake this will need to be changed, otherwise you may be refused travel.

About Shamwari

Your Project

Weekend Excursion

Documents

Travel Details

Pre Departure Info

GAP  
AFRICA  
PROJECTS





# CONSERVATION GROUP EXPERIENCE

## Pre Departure Preparation

Kit List (Laundry)

Plug Adaptors

Local Medical Facilities

Climate

Spending Money £50 - £100

Currency ZAR

Local Charges – Cash Only

Wi-Fi  
R20 -100mb  
R100-500mb  
R150 -1gb

Shop  
Snacks  
Soft Drinks

Curios  
Caps / Hats  
Fleeces  
T-Shirts



About Shamwari

Your Project

Weekend Excursion

Documents

Travel Details

Pre Departure Info

[gapafricaprojects.com/st-johns-school-20-sja](http://gapafricaprojects.com/st-johns-school-20-sja)

GAP  
AFRICA  
PROJECTS





# CONSERVATION GROUP EXPERIENCE



## Vaccinations – [travelhealthpro.org.uk](http://travelhealthpro.org.uk)

### Most Travellers

The vaccines in this section are recommended for most travellers visiting this country. Information on these vaccines can be found by clicking on the blue arrow. Vaccines are listed alphabetically.

<a href="#">Hepatitis A</a>	▼
<a href="#">Tetanus</a>	▼
<a href="#">Typhoid</a>	▼

### Some Travellers

The vaccines in this section are recommended for some travellers visiting this country. Information on when these vaccines should be considered can be found by clicking on the arrow. Vaccines are listed alphabetically.

<a href="#">Cholera</a>	▼
<a href="#">Hepatitis B</a>	▼
<a href="#">Rabies</a>	▼
<a href="#">Tuberculosis (TB)</a>	▼

[About Shamwari](#)

[Your Project](#)

[Weekend Excursion](#)

[Documents](#)

[Travel Details](#)

[Pre Departure Info](#)

GAP  
AFRICA  
PROJECTS





”The only man I envy is the man  
who has not yet been to Africa –  
for he has so much to look  
forward to.”

- Richard Mullin



**THANK YOU – ANY QUESTIONS?**